

## Product Data Sheet

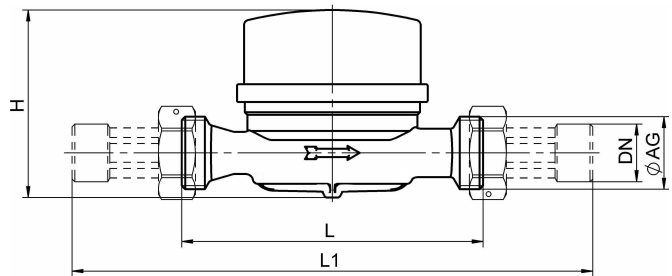
Description: single jet, dry dial water meter,  
roller register, max. display 99.999 m<sup>3</sup>

Article Numbers: 00115TXX00001 - cold water, 00125TXX00001 - warm water



### Technical Details

Medium: Potable water  
Temperature: Cold water max. 30°C  
Warm water max. 90°C  
Operating Pressure: max. 16 bar (PN 16)  
Housing Material: Brass



Type		cold	warm	cold	warm	cold	warm
Article No. XX		80	80	11	11	13	13
Nominal size	DN	mm	15	15	15	20	20
Continous flow rate	Q <sub>3</sub> m <sup>3</sup> /h	2,5	2,5	2,5	2,5	4,0	4,0
Maximal flow rate	Q <sub>max.</sub> m <sup>3</sup> /h	3	3	3	3	5	5
Flow rate at 1bar pressure loss	m <sup>3</sup> /h	3,20	3,20	3,20	3,20	5,05	5,05
Starting flow rate	approx. l/h	8	8	8	8	15	15
Ratio horizontal		40/80/100	40/80/100/160	40/80/100/160	40/80/100/160	40/80/100/160	40/80/100/160
Ratio vertical		40/63	40/50	40/50	40/50	40/80	40/80
Connecting threads according to ISO 228/1	male	G ¾" B	G ¾" B	G ¾" B	G ¾" B	G1" B	G1" B
Overall length	L						
	L <sub>1</sub> mm	80	110	110	110	130	130
	mm	160	190	190	190	227	227
Height	H mm	69	69	69	69	69	69
Display range of dial		Min. 0,1 Ltr. / max. 99.999 m <sup>3</sup>					
Weight:	without connectors	ca. kg	0,45	0,50	0,50	0,57	0,57
	with connectors	ca. kg	0,65	0,70	0,70	0,92	0,92

Special types and special lengths on request.

Status: October 2017

Subject to technical alterations.