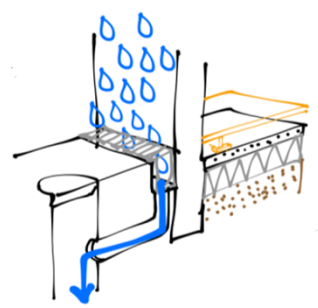

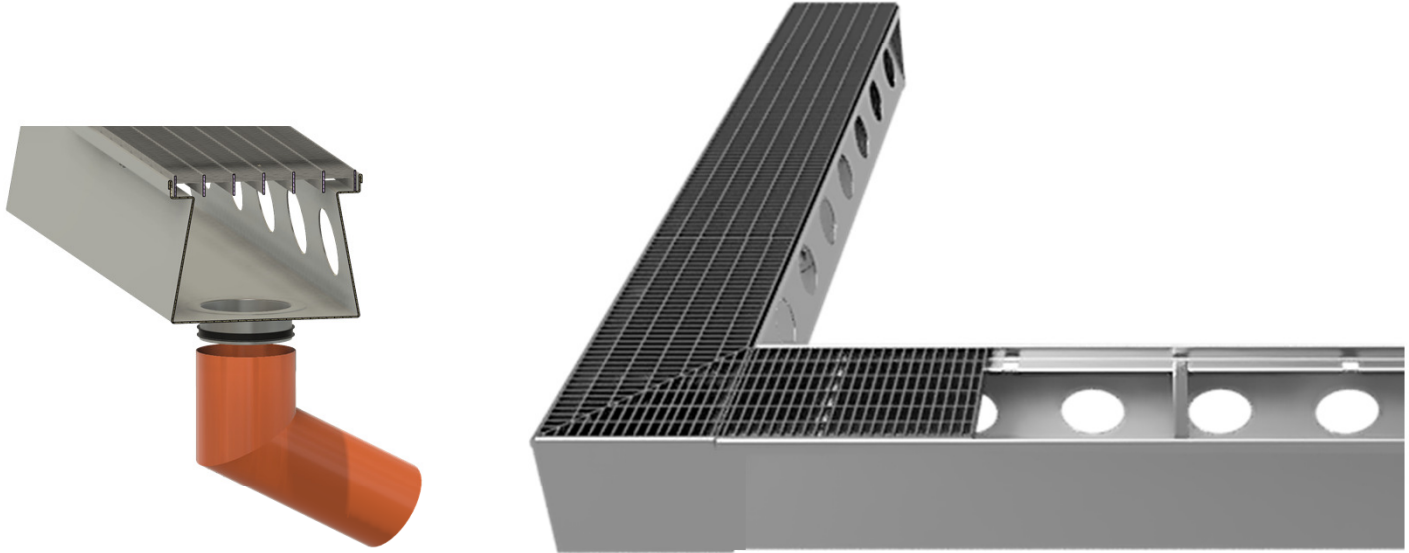









# FLEXI AQUA

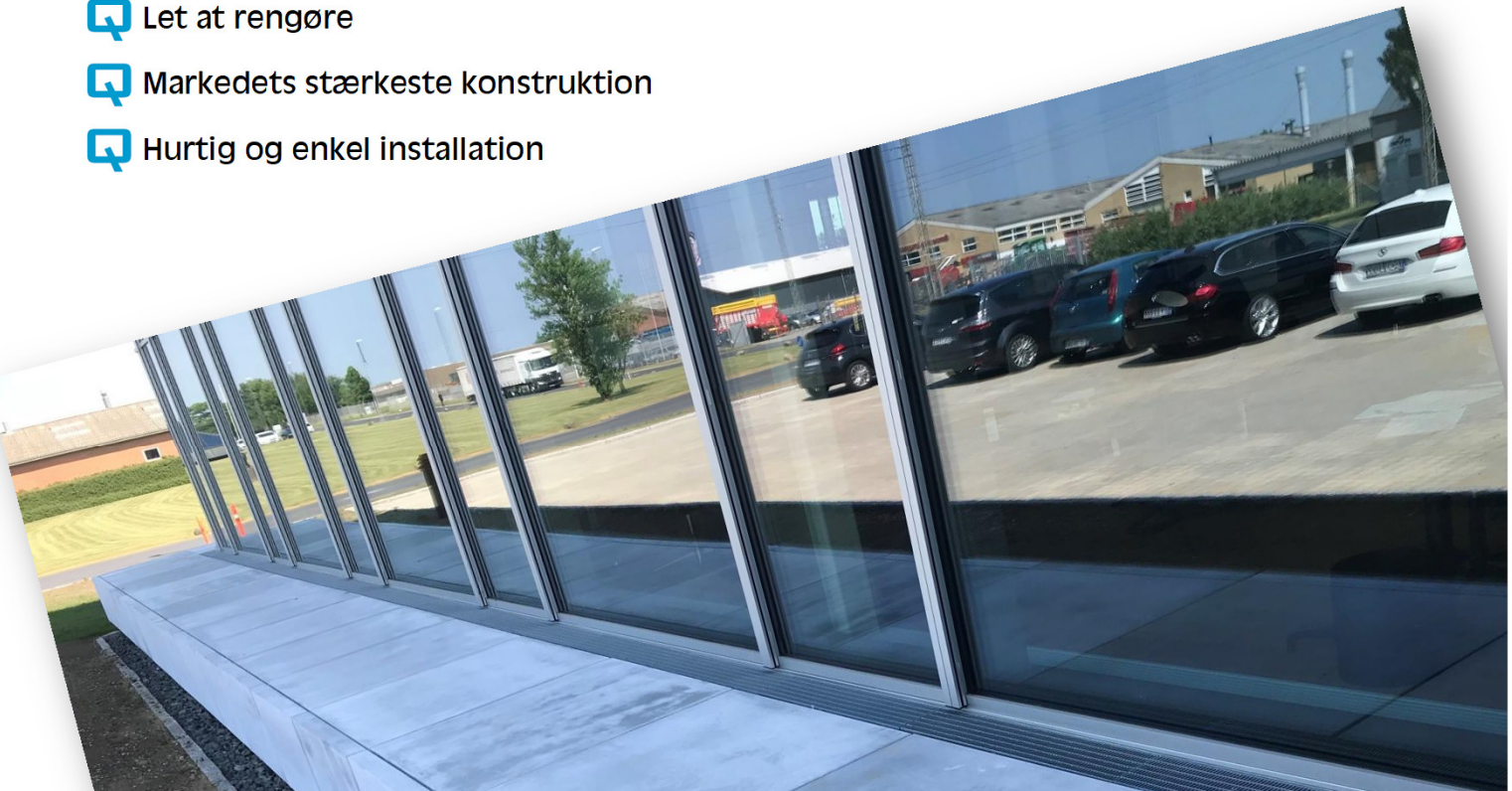
## SOKKELAFFUGTER



 Danskproduceret sokkelaffugter med mulighed for tilslutning til kloaksystemet

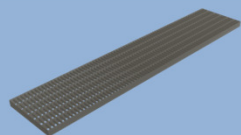


-  Videreudvikling af den populære Flexi Sokkelaffugter
-  Ventilerer og affugter bygningens fundament
-  Sikrer niveaufri adgang
-  Forhindrer nedsivning af overfladevand ved bygningens fundament
-  Let at rengøre
-  Markedets stærkeste konstruktion
-  Hurtig og enkel installation



# FLEXI AQUA

## SOKKELAFFUGTER



### Gitterrist

30x9 mm maskeåbning

100 mm

1250x100x25 mm

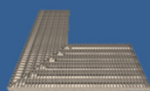
Varmforzinket iht. DS/EN1461

200 mm

1000x200x25 mm

300 mm

1000x300x25 mm



### Hjørnerist

100 mm

500x500x25 mm

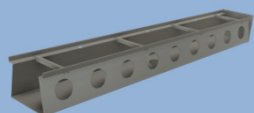
Varmforzinket iht. DS/EN1461

200 mm

500x500x25 mm

300 mm

500x500x25 mm



### Sokkelaffugter

100 mm

1500x110x175 mm

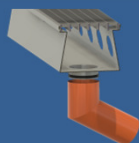
Aluzink DX51D

200 mm

1500x210x175 mm

300 mm

1500x310x175 mm



### Sokkelaffugter

m/studs for Ø110 rør

100 mm

1500x110x175 mm

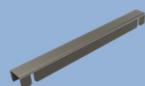
Aluzink DX51D

200 mm

1500x210x175 mm

300 mm

1500x310x175 mm



### Afstivning

100 mm

100x25x25 mm

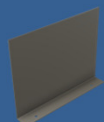
Aluzink DX51D

200 mm

200x25x25 mm

300 mm

300x25x25 mm



### Endeplade

100 mm

110x175x40 mm

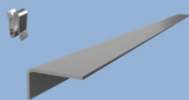
Aluzink DX51D

200 mm

210x175x40 mm

300 mm

310x175x40 mm



### Vinkel for døråbning

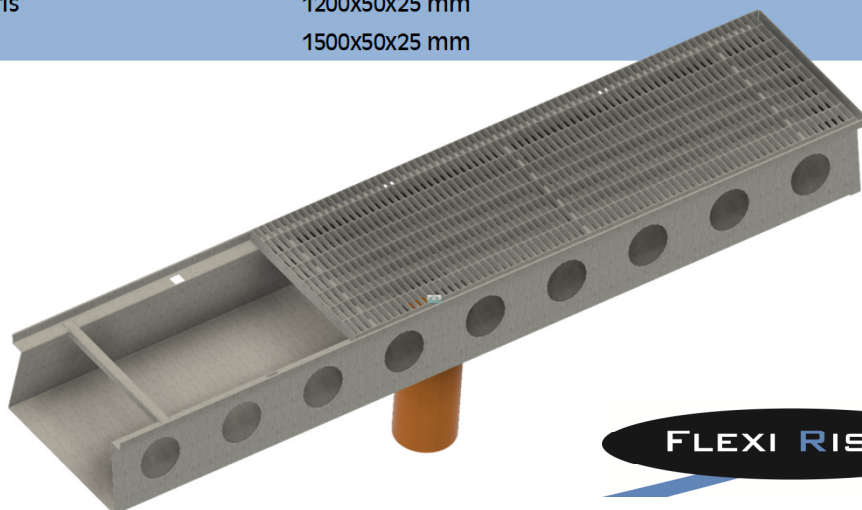
Specialmål uden merpris

990x50x25 mm

Varmforzinket iht. DS/EN1461

1200x50x25 mm

1500x50x25 mm



FLEXI RISTE