



MasterConnect LEDtube EM/mains T8



MasterConnect LEDtube IA 600mm HO 7W840 T8

Introducing MasterConnect LEDtubes - smart retrofit LED T8 lamps that give you an easy and seamless way to upgrade to connected lighting. Simply set up with an intuitive app and MasterConnect LED tube lighting can be programmed to maximize energy savings, while providing wireless and automated light for your comfort and convenience. What's more, it is fully scalable and upgradable. If you want to enjoy additional benefits such as remote control or a management dashboard, you can simply keep the lamps you currently have installed and add a gateway to experience all the advantages of a cloud-based system. There's no better way to take lighting solutions to the next level.

Product data

General information		Color Consistency	
Cap-Base	G13 [Medium Bi-Pin Fluorescent]	Color Consistency	<6
CE mark	Yes	Color Rendering Index (Nom)	83
EU RoHS compliant	Yes	LLMF At End Of Nominal Lifetime (Nom)	70 %
Nominal Lifetime (Nom)	60000 h	Operating and electrical	
Switching Cycle	200000	Input Frequency	50 to 60 Hz
Flux measurement reference	Sphere	Power (Nom)	7 W
Tier	MasterConnect	Lamp Current (Max)	37 mA
		Lamp Current (Min)	34 mA
		Starting Time (Nom)	0.5 s
		Warm Up Time to 60% Light (Nom)	0.5 s
		Power Factor (Nom)	0.9
		Voltage (Nom)	220-240 V
Light technical		Temperature	
Color Code	840 [CCT of 4000K]	T-Ambient (Max)	45 °C
Beam Angle (Nom)	160 °		
Luminous Flux (Nom)	1050 lm		
Color Designation	Cool White (CW)		
Correlated Color Temperature (Nom)	4000 K		
Luminous Efficacy (rated) (Nom)	150 lm/W		

MasterConnect LEDtube EM/mains T8

T-Ambient (Min)	-20 °C
T-Storage (Max)	65 °C
T-Storage (Min)	-40 °C
T-Case Maximum (Nom)	40 °C

Controls and dimming

Dimmable	Wireless Dim
----------	--------------

Mechanical and housing

Product Length	600 mm
Bulb Shape	Tube, double-ended

Approval and application

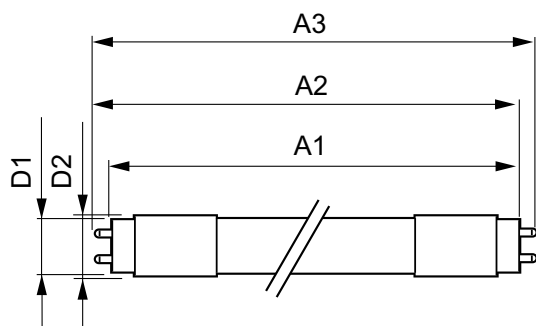
Energy Efficiency Class	D
Energy Saving Product	Yes
Approval Marks	RoHS compliance TUV CE marking KEMA Keur certificate

Energy Consumption kWh/1000 h	7 kWh
EPREL Registration Number	406206

Product data

Full product code	871869971748300
Order product name	MasterConnect LEDtube IA 600mm HO 7W840 T8
EAN/UPC - Product	8718699717483
Order code	929002295302
Numerator - Quantity Per Pack	1
Numerator - Packs per outer box	10
Material Nr. (12NC)	929002295302
Net Weight (Piece)	0.150 kg

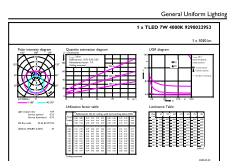
Dimensional drawing



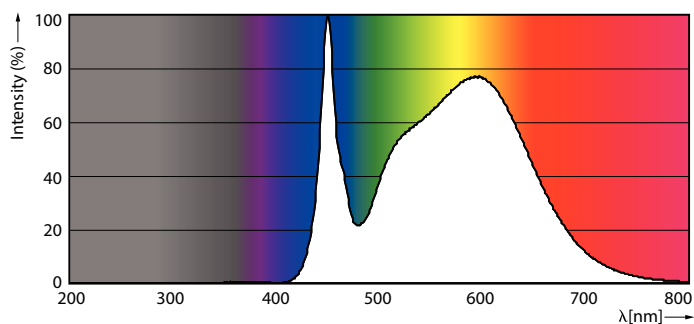
MasterConnect LEDtube IA 600mm HO 7W840 T8

Product	D1	D2	A1	A2	A3
MasterConnect LEDtube IA 600mm HO 7W840 T8	25.8 mm	28 mm	588.5 mm	595.5 mm	602.5 mm

Photometric data



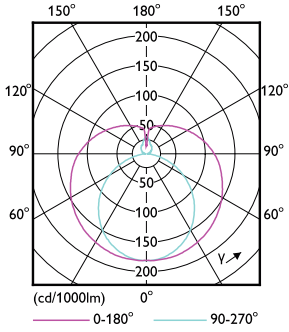
MC LEDtube 7W G13 1050lm 840



MC LEDtube G13 840

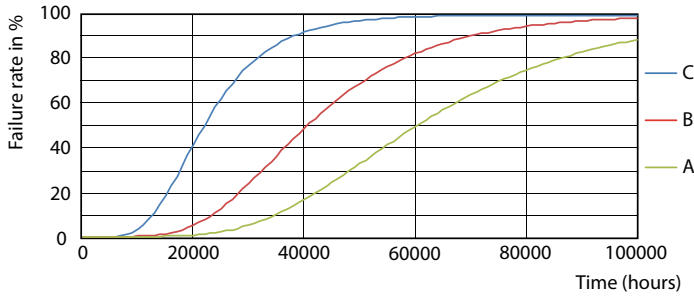
MasterConnect LEDtube EM/mains T8

Photometric data

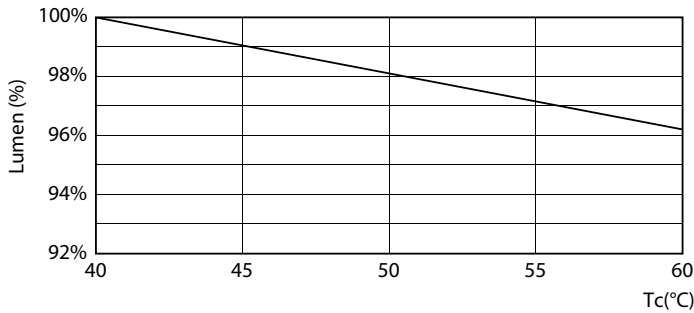


MC LEDtube G13

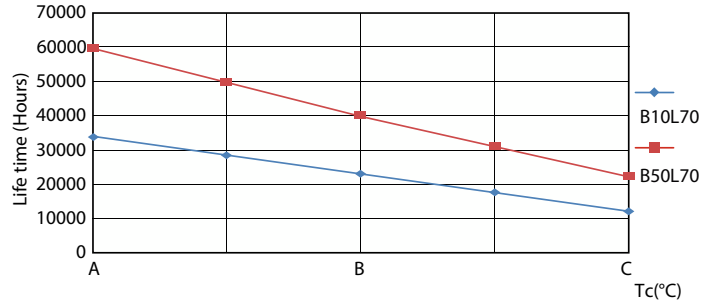
Lifetime



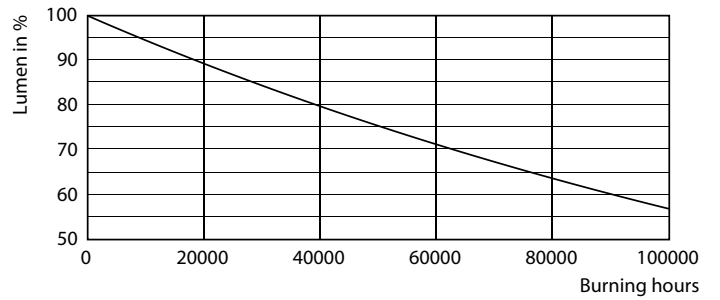
FailureRate



MC LEDtube 7W 60K LumenVsTc



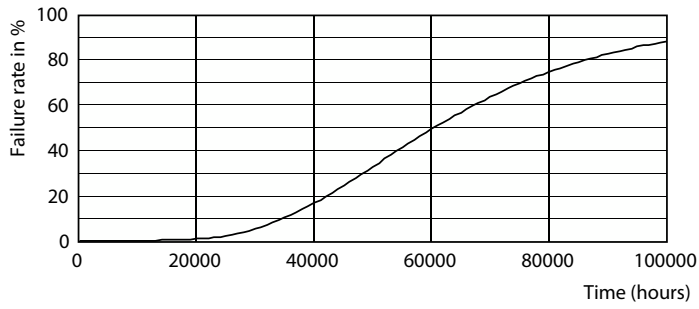
LifetimeVsTc



Lumen Maintenance Diagram

MasterConnect LEDtube EM/mains T8

Lifetime



Life Expectancy Diagram

